

KV8558**5MP IP Video Intercom Waterproof Vandal-Resistant Doorbell**

The KV8558 vandal-resistant doorbell, designed with metal, helps to provide a safety environment with high resolution. It supports physical doorbell, which is convenient for calling. You can also view, chat with, and send permission for the visitor via mobile phone in anywhere. The device is powered by the standard PoE, and is no need to wire extra power supply, which is easy for installation and deployment. With vandalproof and IP65 high protective levels, it is safe and suitable for high-end apartment, villa, government building, construction sites, etc.

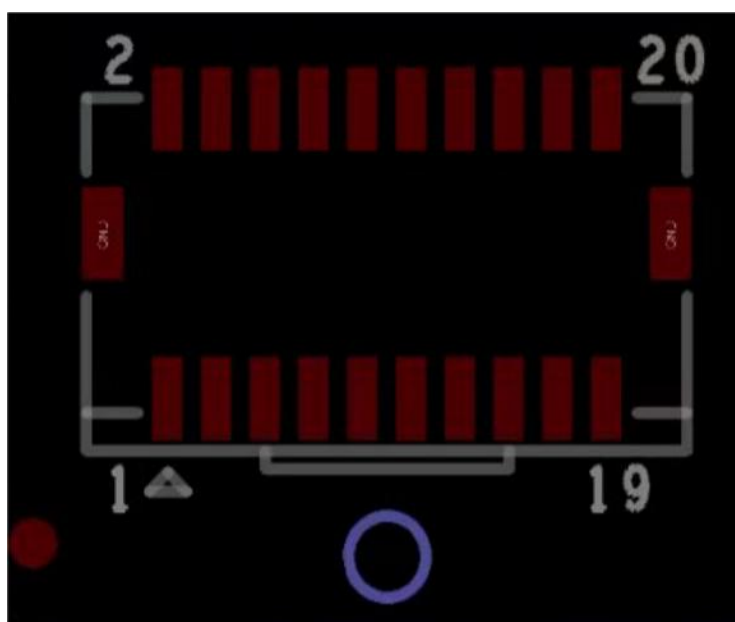
- 5MP 2592x1944@30fps HD door station with IR supplement providing excellent image quality
- Supports standard POE power supply
- Supports mechanical doorbell, easier to call
- Noise suppression and echo cancellation
- Convenient Tuya APP Mobile Control: Receive calls, open the door and live view remotely
- Supports web configuration

Specification

Image sensor	
Screen size	5MP, 1/2.7", Day/Night
Maximum Resolution	2592x1944@30fps
Minimum illumination	B/W: 0.03Lux
Video parameters	
Resolution	Mainstream: 2560x1440/1920x1080/@30fps Sub stream: 640x480/640x360@30fps
FOV	Horizontal: 125°Vertical: 65°
WDR	DWDR
Supplement light	IR light,940nm
Video compression standard	H.265/H.264
Audio parameters	
Audio input	1 built-in omnidirectional microphone
Audio compression standard	G711
Audio output	1 built-in loudspeaker
Audio quality	noise suppression and echo cancellation
Volume adjustment	Adjustable
Network parameters	
Network protocol	HTTP/TCP/IP/HTTPS/NTP/ONVIF/RTSP/DHCP/SIP
Device interfaces	
Alarm input	2
Network interface	1 RJ-45, 10/100 Mbps self-adaptive
General	
Button	1 physical button
Installation	Surface mounting
Protective level	IP65,Metal vandalproof
Working temperature	-40 °C to 70 °C
Working humidity	10% to 90% (no-condensing)
Dimension (W × H × D)	177mm x 74mm x 53.4mm
Power supply	12VDC, PoE
Application environment	Outdoor and Indoor

Interface for terminal

Pin	Functional Definition	Pin	Functional Definition
1	485-A2	2	485-A1
3	485-B2	4	485-B1
5	GND	6	ALARM IN-NC
7	5V Output	8	ALARM IN-COM
9	NC	10	ALARM IN-NO
11	GND	12	Alarm In1
13	GND	14	Alarm In2
15	Uart	16	Uart
17	12V Input	18	GND
19	12V Input	20	GND



Dimension

